

ARDEN P.U.D. PLAT 1

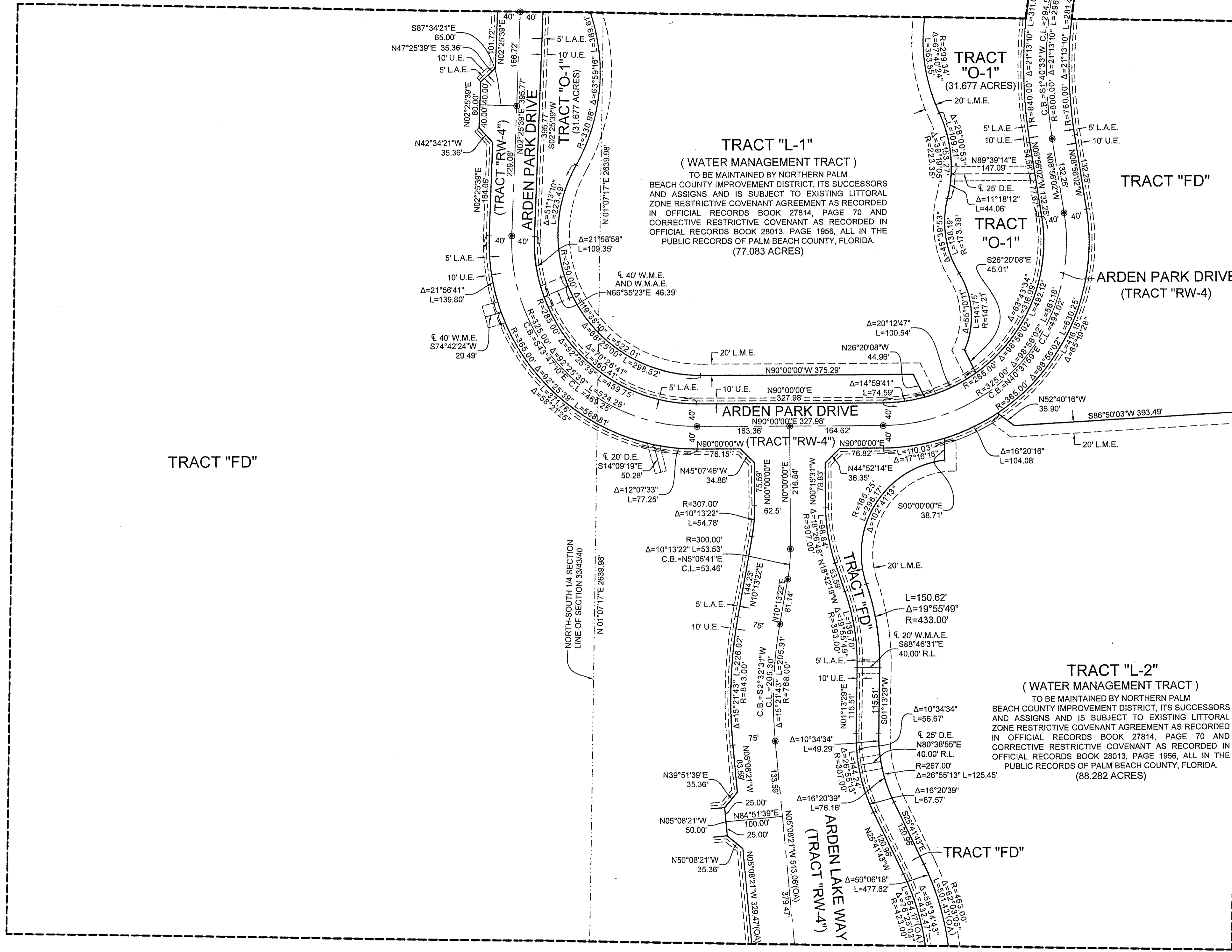
BEING A PARCEL OF LAND, LYING IN SECTIONS 21, 22, 27, 28, 33 AND 34,
TOWNSHIP 43 SOUTH, RANGE 40 EAST, PALM BEACH COUNTY, FLORIDA.
SHEET 13 OF 20

44

COUNTY OF PALM BEACH)
STATE OF FLORIDA) SS
THIS PLAT WAS FILED FOR RECORD AT)
M. THIS DAY OF)
2016, AND DULY)
RECORDED IN PLAT BOOK NO.)
ON PAGE THRU)
CLERK AND COMPTROLLER)
BY: D.C.)

MATCH TO SHEET 12

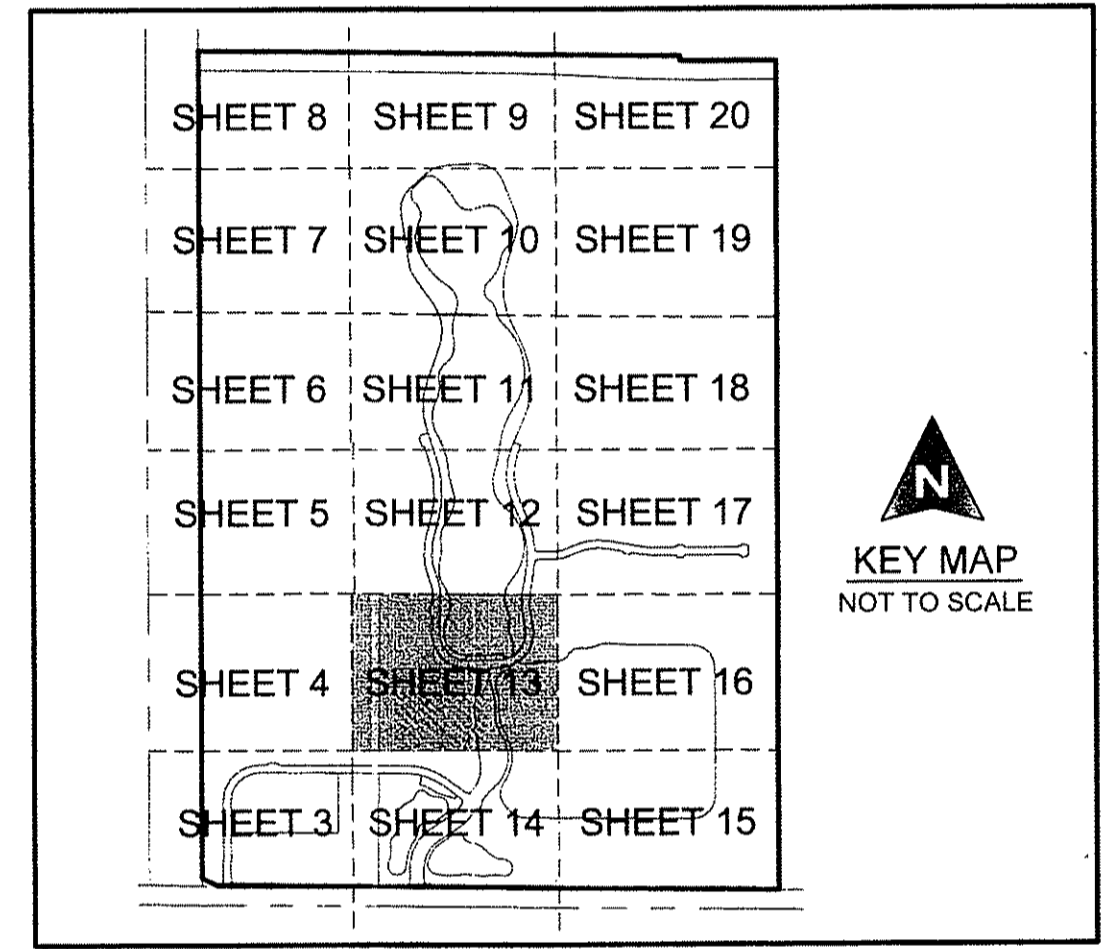
MATCH TO SHEET 12



MATCH TO SHEET 16

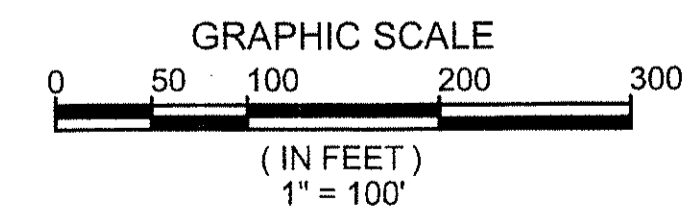
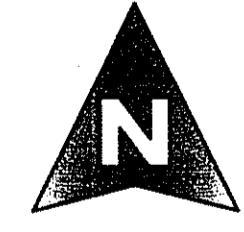
MATCH TO SHEET 4

MATCH TO SHEET 14

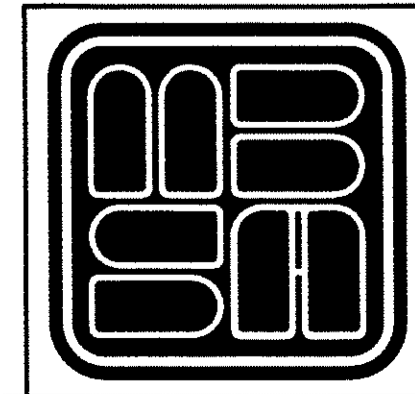


KEY MAP
NOT TO SCALE

COORDINATE NOTE:
STATE PLANE COORDINATES SHOWN ARE GRID DATUM, NAD 83 1990
ADJUSTMENT, FLORIDA EAST ZONE, COORDINATE SYSTEM 1983 STATE
PLANE, TRANSVERSE MERCATOR PROJECTION
LINEAR UNIT = US SURVEY FEET
ALL DISTANCES ARE GROUND
SCALE FACTOR = 0.99999219
GROUND DISTANCE X SCALE FACTOR = GRID DISTANCE
BEARINGS AS SHOWN HEREON ARE GRID DATUM, NAD 83 1990
ADJUSTMENT, FLORIDA EAST ZONE.



SHEET 13 OF 20



MICHAEL B. SCHORAH & ASSOCIATES, INC.
1850 FOREST HILL BLVD., SUITE 208
WEST PALM BEACH, FLORIDA 33408
EB# 2438 TEL. (561) 968-0080 FAX. (561) 642-8726 LB# 2438

ARDEN P.U.D. PLAT 1